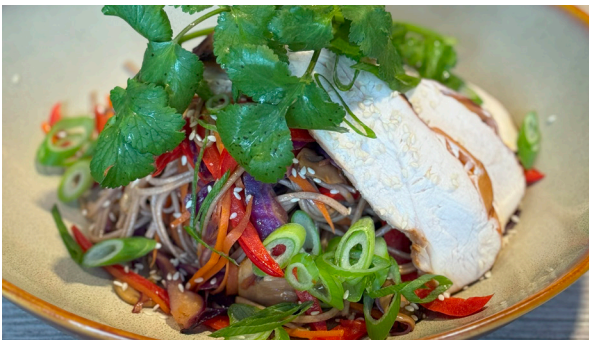


Speedy Service Menu



Monday's & Tuesday's at The Social

ALL DAY BRUNCH from 9am

\$10

Breakfast brioche bun with bacon,
poached egg and hollandaise
GF option

Buttermilk pancakes with maple
butter, banana and caramel

Chorizo and goats' cheese omelet
with sourdough
GF option

Chili scrambled egg croissant with
sour cream and chives

Wild boar breakfast dog with egg,
tomato, cheese and onion

LUNCH from 11am to 1pm

\$10

Seafood Chowder with sourdough

Soba noodle salad with sautéed
vegetables and honey/soy chicken

Grain salad with quinoa, pinenuts,
pomegranate, currants and yoghurt
GF

Burger 101, cheese, bacon, lettuce,
pickles, mayo, relish
GF option

Slow roasted pork baguette, slaw
and roasted chipotle mayo

SIDES

\$5

Cauliflower fritters with paprika mayo

Chips with aioli