



CIS Knowledge Base

Euroam Wi-Fi Connectivity



Document ID:	10220	Category:	CIS
Collection:	Customer Knowledge	Subcategory:	Wireless Network
Last reviewed:		07/03/2022	

Table of Contents

Overview	2
Windows 10.....	3
iOS (iPhone / iPad)	5
Android OS.....	7
MacOS	11

Overview

Eduroam is a federated authentication service to assist staff and students to connect quickly and securely to The Gordon wireless network while providing the ability to use your own Gordon credentials to connect to eduroam partner wireless networks.

The eduroam wireless network is available to all staff, students, and participating institutions' guests.

The eduroam service provides access to the Internet, not internal Institute resources. To access eduroam, follow the steps according to your device type.

Windows 10

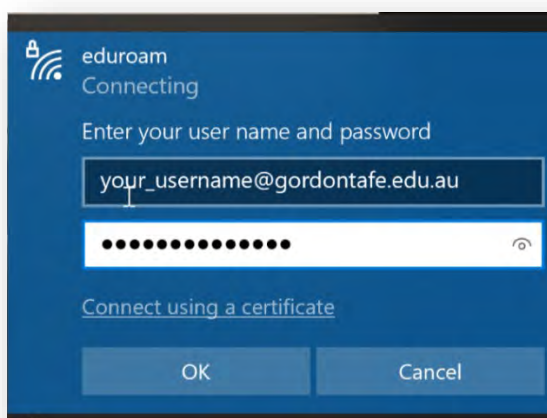
- 1) Select **eduroam** in your Wi-Fi options, then select **Connect**.



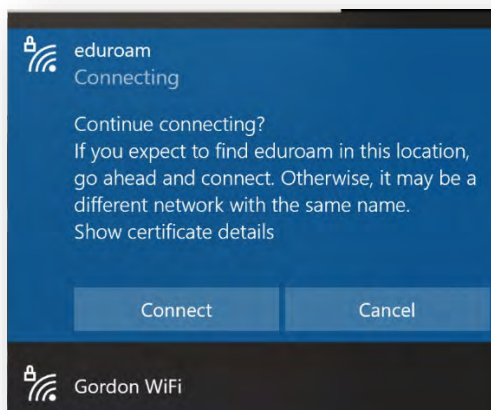
- 2) Enter your Gordon email address into the Username field.
 - a) Student email is YourStudentNumber@gordontafe.edu.au
 - b) Staff email is username@gordontafe.edu.auEnter your Gordon password into the password field

If you are from another eduroam federated institution enter your email address and password from your home institution.

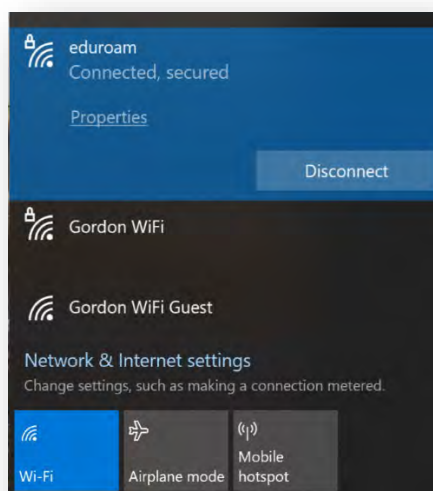
Select **OK**.



- 3) On the next screen select **Connect**.



- 4) Once successfully connected, your device will show the connection status on the Wi-Fi settings screen as **eduroam Connected, secured**.



iOS (iPhone / iPad)

- 1) Select **eduroam** in your Wi-Fi options.

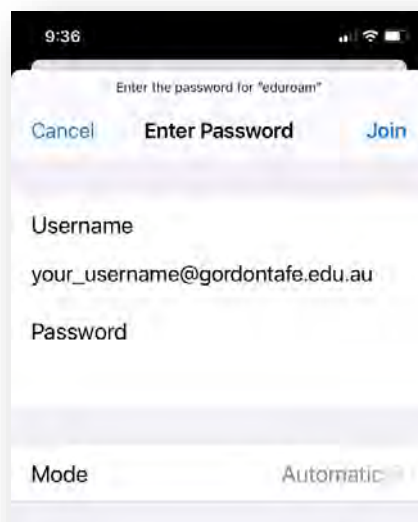


- 2) Enter your Gordon email address into the Username field.
 - a) Student email is YourStudentNumber@gordontafe.edu.au
 - b) Staff email is username@gordontafe.edu.au

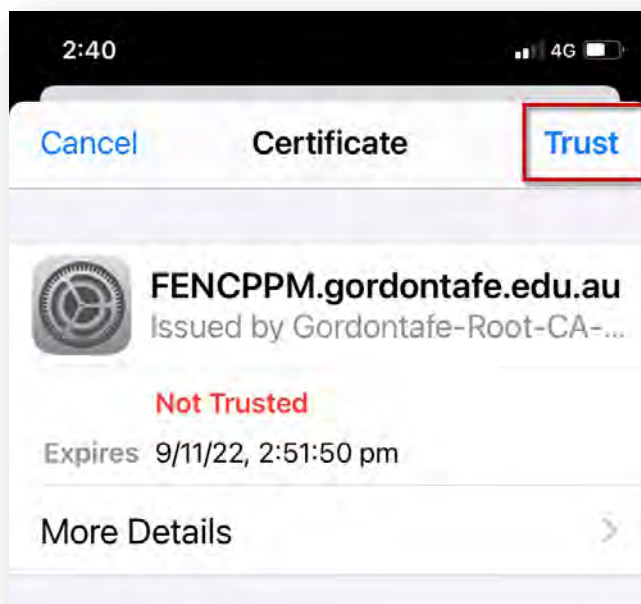
Enter your Gordon password into the password field

If you are from another eduroam federated institution enter your email address and password from your home institution.

Select **Join**.



- 3) Trust the presented certificate.



- 4) A tick next to eduroam will appear confirming you're connected to the eduroam wireless service.

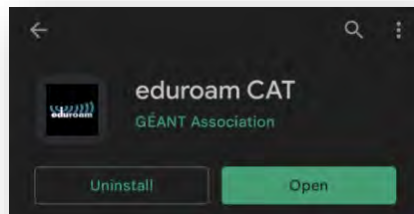
(Note: If connection does not appear to complete, open a browser window to test Internet connectivity).



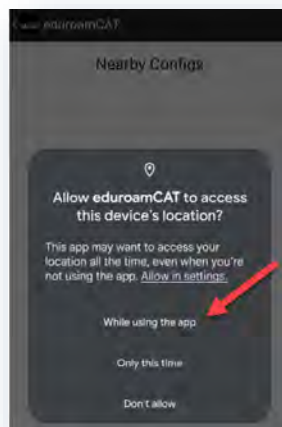
Android OS

Note: The below images are taken using **Android OS 11**, previous Android OS versions may have different images but the general steps will be the same.

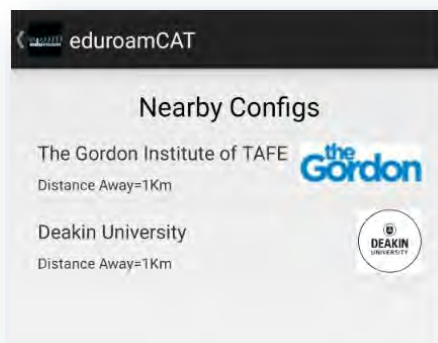
- 1) Open the **Play Store** app on your Android Device, search for, and install the **eduroam CAT** app.



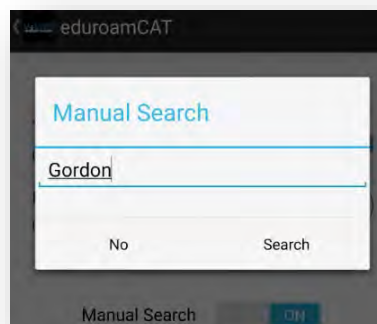
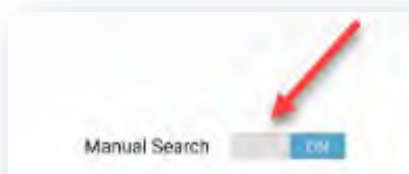
- 2) Open the **eduroam CAT** application and **allow** the app to access the device location.



- 3)
 - a) Within 'Nearby Configs', select '**The Gordon Institute of TAFE**'.

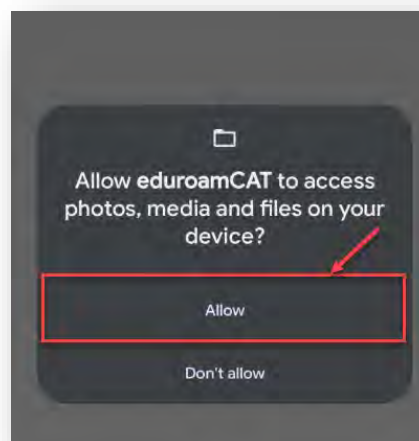
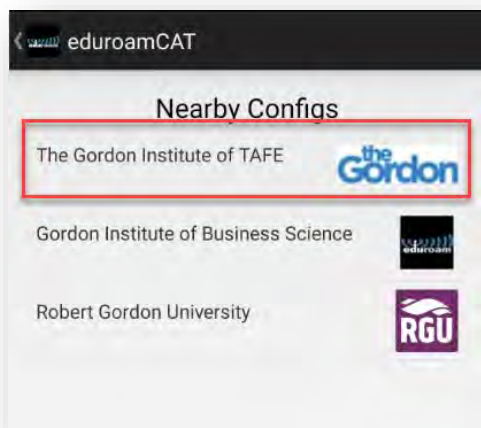


- b) If **The Gordon Institute of TAFE** does not appear, select **Manual Search**, and search for **Gordon**.

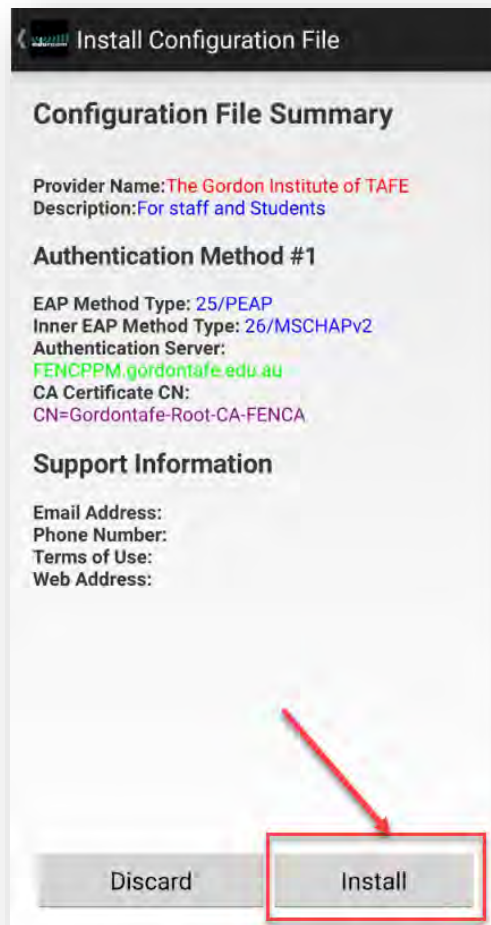


Note: You may be required to wait for 10-20 seconds for the search to complete.

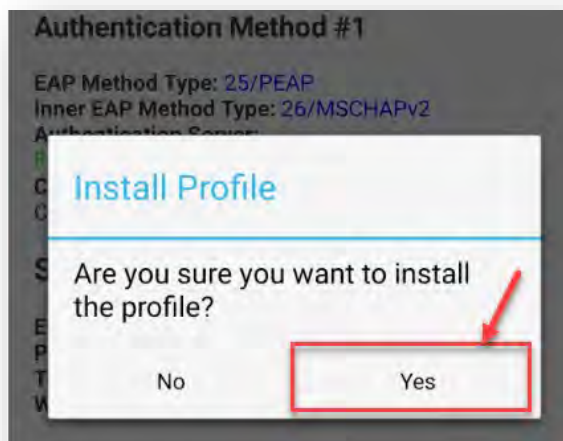
- 4) Select **The Gordon Institute of TAFE** from the list and select **Allow eduroamCAT** to access files on your device.



- 5) The profile configuration details will appear. Select **Install** to proceed with the installation.



- 6) Select **Yes** to confirm installation.



- 7) Enter your **Gordon** email address and password, then **select install** to connect to eduroam.

Note: If you are from another eduroam federated institution, enter your email address and password from your home institution.

Username: jordan@cordontafe.edu.au

Password:

Installing a profile will replace any existing eduroam settings

Install

Status: WiFi ON: COMPLETED "Gordon WiFi Guest"

- 8) You are successfully connected to **eduroam**.

eduroamCAT

INSTALL PROFILES STATUS

eduroam

Current device configuration:

- Found SSID "eduroam" with mixed mode
- Anon ID missing (optional)
- User ID=jordan@cordontafe.edu.au
- EAP Method=PEAP with Phase2.MSCHAPv2
- CA Certificate OK
- Server Subject

Username: jordan@cordontafe.edu.au

Password:

Profile installed

Install

Status: CONNECTED to SSID "eduroam"

MacOS

- 1) Select **eduroam** in your Wi-Fi options.



- 2) Enter your Gordon email address into the Username field.
 - a) Student email is YourStudentNumber@gordontafe.edu.au
 - b) Staff email is username@gordontafe.edu.au

Enter your Gordon password into the password field

If you are from another eduroam federated institution enter your email address and password from your home institution.

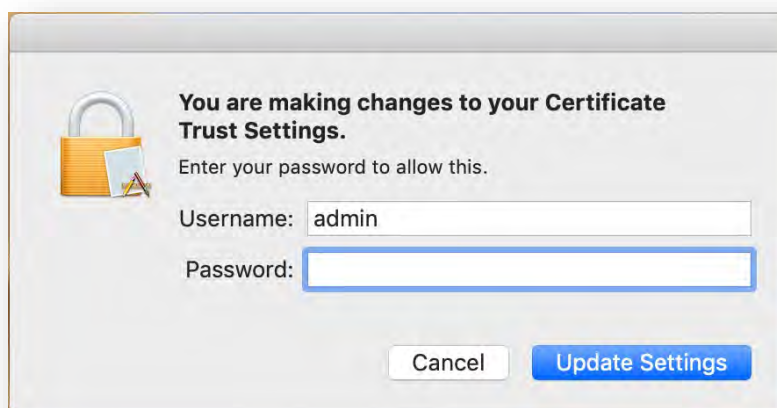
Select **Join**.



- 3) Select **Continue**.



- 4) You may be prompted to approve the changes.
Enter your MacOS computer account details, and select **Update Settings**.



- 5) The **eduroam** Wi-Fi network should now show as connected.

