

# Gordon Student and Staff Help Guide

---

## WiFi Connection Guide – Windows 7

Check list:

- ✓ You will require administrator rights on the PC in order to install the Aruba Quick Connect application.
- ✓ All other applications and windows on your device are closed.
- ✓ Your device has the correct date and time. If these details are incorrect, the Gordon WiFi network will not work.
- ✓ You can login to Gordon computers using your username and password.
- ✓ There is at least 10 MB free space on your hard drive.

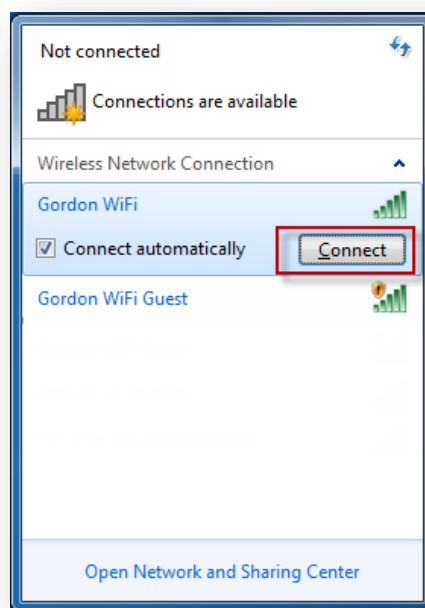
Please note:

- ❖ **As of January 2020, Microsoft has ended support for Windows 7. This guide is provided as-is, with no guarantee that your device will be able to connect to the Gordon WiFi network.**

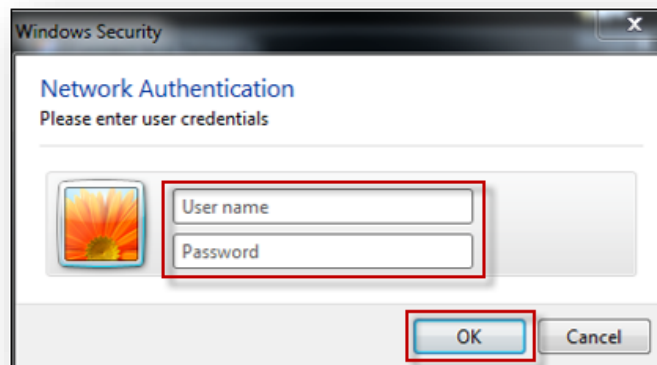
- 1) Windows should present a list of available wireless networks from the system tray.



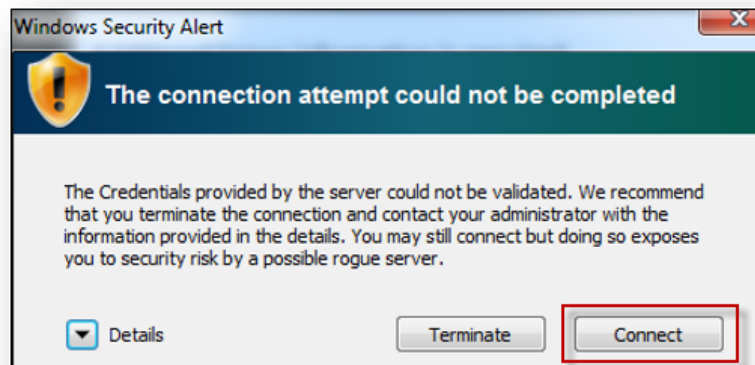
- 2) Select the '**Network**' icon and Windows 7 will display the visible wireless network connections.
- 3) Select **Gordon WiFi** and click **Connect**.



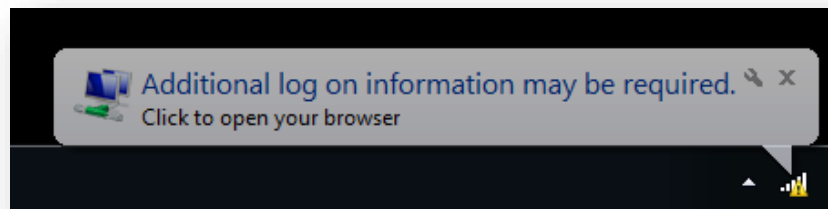
- 4) Enter your Gordon network username and password.
- 5) Select **OK**.



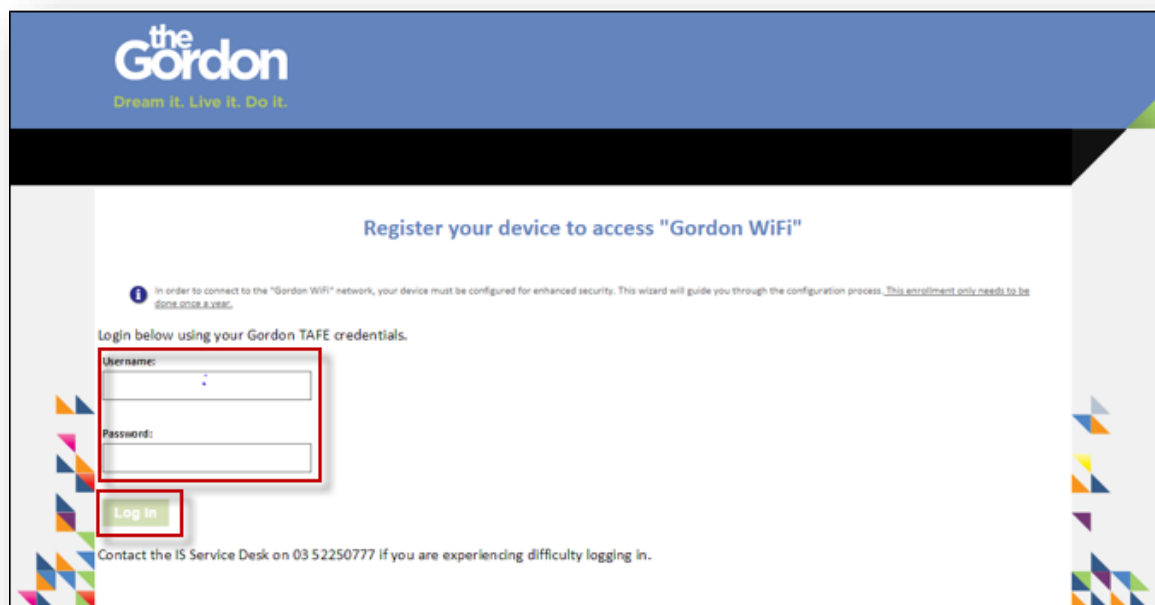
- 6) Select **Connect** at the Windows Security Alert screen (This may appear depending on your security settings).



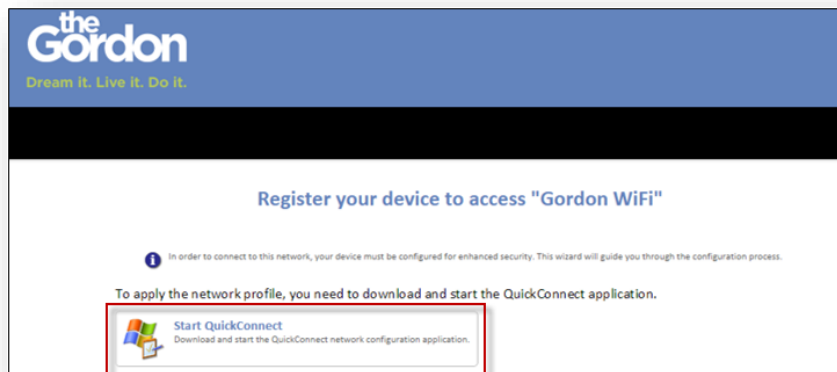
- 7) Once connected to Gordon WiFi you will be prompted to open a browser.



- 8) Open your browser.
- 9) Enter your Gordon network username and password and **Log In**.

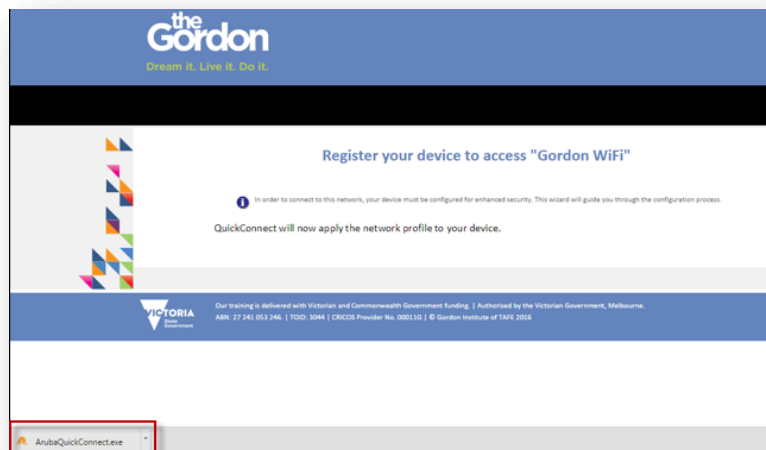


10) Select **Start QuickConnect**.

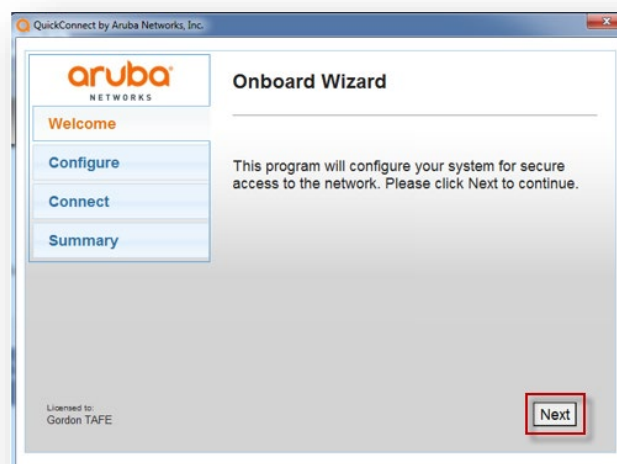


11) The Aruba Quick Connect application will be downloaded.

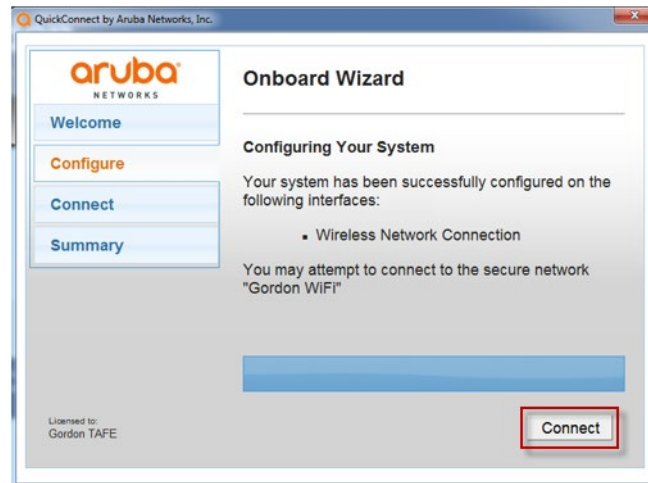
12) **Double click** ArubaQuickConnect.exe to launch installer.



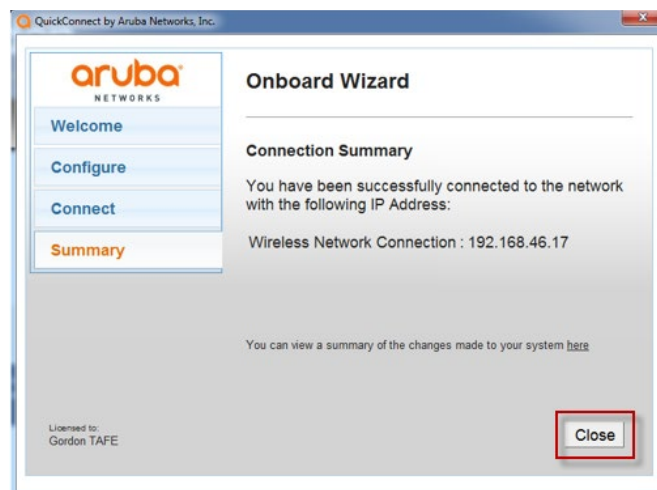
13) Select **Next** on the Onboard Wizard.



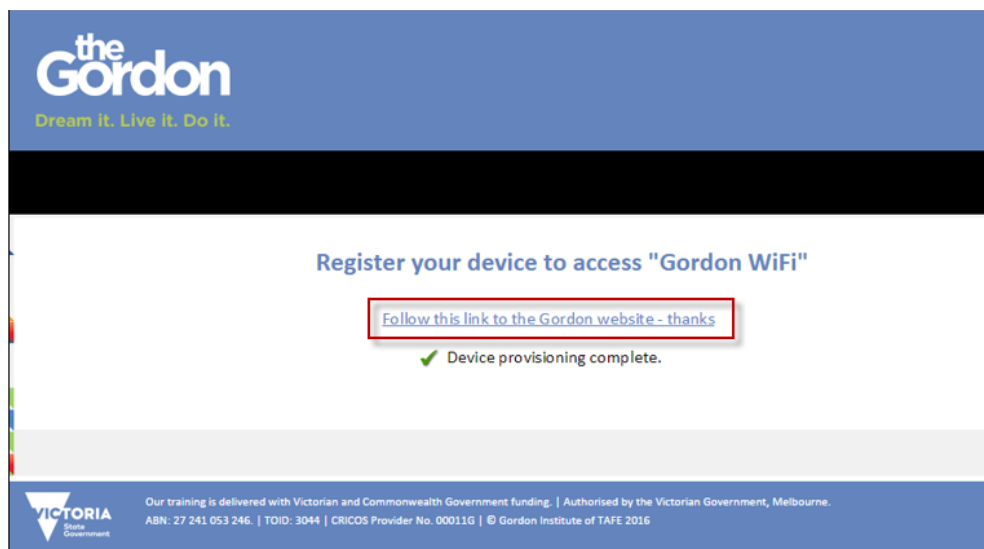
14) Select **Connect**.



15) Select **Close**.



16) Select the link to the **Gordon Website**.



You are now connected to the Gordon WiFi network.